

Rigol DS-4000 Series DSOs



- ▶ 100MHz, 200MHz, 350MHz and 500MHz bandwidth
- ▶ 2 or 4 channels, with large 9 inch display
- ▶ Sampling rate up to 4GS/s
- ▶ Standard 140Mpts memory
- ▶ Higher waveform capture rate of up to 110,000wfms/s
- ▶ Multi-level intensity grading display, up to 256 levels
- ▶ Optional Serial Bus Decoding: 12C decoding, SPI decoding, CAN decoding, RS232/UART decoding, FlexRay decoding

| Model | Bandwidth | Channels | Price Ex GST |
|---------|-----------|----------|--------------|
| DS-4102 | 100MHz | 2 | \$1,999 |
| DS-4104 | 100MHz | 4 | \$2,399 |
| DS-4022 | 200MHz | 2 | \$2,599 |
| DS-4024 | 200MHz | 4 | \$2,899 |
| DS-4023 | 350MHz | 2 | \$3,899 |
| DS-4034 | 350MHz | 4 | \$4,299 |
| DS-4052 | 500MHz | 2 | \$4,699 |
| DS4054 | 500MHz | 4 | \$5,899 |

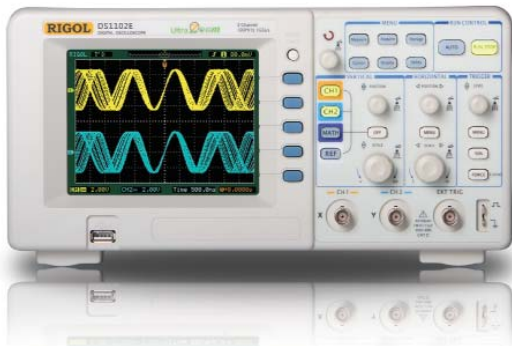
Rigol 500MS/s, 2 Channel Arbitrary Generators



- ▶ 160MHz, 100MHz and 60MHz, with 500MS/s sample rate and 14Bit vertical resolution
- ▶ 2 full functional channels with settable phase
- ▶ 2ppm high freq stability, 115dBc/Hz low phase noise
- ▶ Standard waveforms: Sine, Square, Ramp, Pulse, Noise and Harmonics
- ▶ 150 built-in arbitrary waveforms
- ▶ Versatile analog and digital modulation functions: AM, FM, PM, ASK, FSK, PSK, BPSK, QPSK, 3FSK, 4FSK, OSK, PWM
- ▶ 7 inch colour LCD display (800x480 pixels)

| Model | Bandwidth | Channels | Price Ex GST |
|---------|-----------|----------|--------------|
| DG-4062 | 60MHz | 2 | \$799 |
| DG-4102 | 100MHz | 2 | \$1,024 |
| DG-4162 | 160MHz | 2 | \$1,332 |

Australia's Best Value Digital Storage Oscilloscopes



Now you've got no excuse ... update your old analogue scopes!

Whether you're a TAFE/University, workshop, service technician or hobbyist, the Rigol DS-1000E guarantee Australia's best price.

RIGOL DS-1052E 50MHz

- ▶ 50MHz Bandwidth, 2 Ch
- ▶ 1GS/s Real Time Sampling
- ▶ 512k Memory Per Channel
- ▶ USB Device & Host Support

ONLY \$329 ex GST

RIGOL DS-1102E 100MHz

- ▶ 100MHz Bandwidth, 2 Ch
- ▶ 1GS/s Real Time Sampling
- ▶ 512k Memory Per Channel
- ▶ USB Device & Host Support

ONLY \$399 ex GST

Positional Current Probe



- ▶ Observe and measure current in PCB tracks, captive component leads and ground planes where conventional probes can't be used
- ▶ Use with any normal oscilloscope
- ▶ Bandwidth of DC to 5MHz
- ▶ Wide dynamic range of 10mA to 20A peak to peak
- ▶ No need to break or surround the conductor
- ▶ Minimal disturbance to circuit conditions through very low insertion impedance and stray capacitance
- ▶ Useable in confined and difficult to access spaces
- ▶ Measures current into surface mount components, IC legs and short component leads
- ▶ Can observe current flowing within ground planes
- ▶ Useable on high voltage conductors and in high temperature areas

TTi I-Prober-520 \$859 ex GST

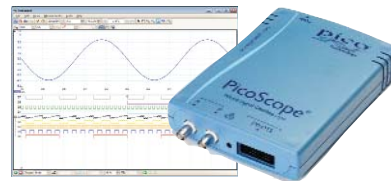
20MHz Generator



- ▶ 2 channels, 20MHz
- ▶ 100MS/s, 14bit arbitrary generator
- ▶ Lowest cost 2 channel generator
- ▶ Standard waveforms sine, square, ramp, triangle, pulse, noise, arb
- ▶ Modulation AM, FM, FSK, PM
- ▶ Sweep linear or logarithmic

Rigol DG-1022 \$499 ex GST

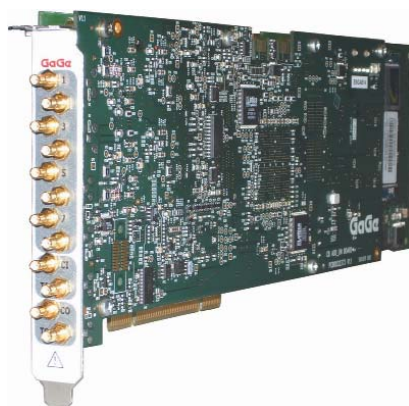
Pico PC-Based MSO



- ▶ 2 channel DSO, 25MHz bandwidth
- ▶ 16 channel logic analyser
- ▶ 200MS/s mixed signal sampling
- ▶ 100kHz function generator arbitrary waveform generator
- ▶ 25MHz spectrum analyser
- ▶ Serial decoding & mask limit testing

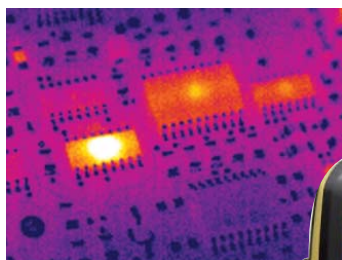
Pico 2205 \$489 ex GST

GaGe High Speed Digitiser Cards



- ▶ 8 bit up to 4GS/s
- ▶ 12 bit up to 2GS/s
- ▶ 14 bit up to 200MS/s
- ▶ 16 bit up to 200MS/s
- ▶ Up to 64 channels in multcard system
- ▶ Up to 8 channels per card
- ▶ PCIe streaming at 3.1GB/second
- ▶ Multiple record segmentation
- ▶ On-board memory up to 32GB
- ▶ eXpert flexible & customisable FPGA technology on-board PCI digitisers
- ▶ SDKs available for LabView, C/C# and MATLAB

Thermal Imagers for PCB Inspections



- ▶ High precision 384 x 288 array
- ▶ Extra large 3.5" high resolution display
- ▶ Visible light camera with LV version and DuoVision picture-in-picture display
 - ▶ Accuracy $\pm 2\%$ or $\pm 2^\circ\text{C}$
 - ▶ Focal distance 0.10m
 - ▶ Frame rate 50/60Hz
 - ▶ 4 moveable spots
 - ▶ 2.5 hours battery operating time
 - ▶ USB PC interface
 - ▶ Multi-page reporting and analysis software included

Trotec IC080L \$5,374 ex GST
Trotec IC080LV \$6,719 ex GST

TTi 3GHz Counter

- ▶ 3GHz frequency counter
- ▶ High input sensitivity
- ▶ Battery powered
- ▶ 3Hz up to 3GHz in two overlapping ranges
- ▶ Period measurement from 8ns to 330ms
- ▶ Low pass filter reduces noise



TTi PFM-3000 \$227 ex GST

Device Programmer



- ▶ 48-pin Textool ZIF socket
- ▶ Supports over 16,000 devices
- ▶ High speed - programs 68Mbit flash memory in 42 seconds
- ▶ USB interface
- ▶ Free software update downloads

EE Tools TopMax II \$805 ex GST

Differential Probes



- ▶ Safely make high-voltage measurements on floating circuits
- ▶ GDP-025 & GDP-050 1,400V & GDP-100 7,000V differential voltage

GW GDP-025 25MHz \$260 ex GST
 GW GDP-050 50MHz \$460 ex GST
 GW GDP-100 100MHz \$590 ex GST

2.7GHz Spectrum Analyser



- ▶ Frequency range 1MHz to 2700MHz
- ▶ Resolution bandwidths of 1MHz, 280kHz or 15kHz
- ▶ -96dBm typical noise floor at -20dBm reference level
- ▶ Fully adjustable centre frequency and span in 1kHz steps
- ▶ Choice of centre plus span or start plus stop setting
- ▶ Zero span mode with AM and FM audio demodulation
- ▶ Sweep modes of normal, single, peak hold and average
- ▶ Simultaneous display of live and reference traces
- ▶ Twin markers with readout of absolute & difference values
- ▶ Smart marker movement with selectable peak tracking
- ▶ Display of limit lines with editor

TTi PSA2701T \$1,780 ex GST

PicoScope 6000 Series - Up To 1GHz



- ▶ 350MHz, 500MHz & 1GHz bandwidth
- ▶ 5GS/s real time sampling
- ▶ Up to 1GS memory
- ▶ Arbitrary waveform 12bit, 200MS/s & function generator from DC to 20MHz
- ▶ Advanced triggers
- ▶ Automatic & built-in measurements
- ▶ Spectrum Analyser
- ▶ Serial data decoding
- ▶ Mask limit testing
- ▶ Digital low-pass filtering
- ▶ 10,000 waveform buffer
- ▶ x100,000,000 zoom
- ▶ Hi-speed USB2.0 interface
- ▶ Software development kit

| Model | Bandwidth | Memory | Price Ex GST |
|-------|-----------|--------|--------------|
| 6402 | 350MHz | 32MS | \$5,799 |
| 6403 | 350MHz | 1GS | \$7,457 |
| 6404 | 500MHz | 1GS | \$9,117 |
| 6407 | 1GHz | 1GS | \$9,946 |

Metrel PowerQ4 Handheld Power Quality Analyser



Metrel PowerQ4 \$4,176 ex GST

- ▶ 4 voltage channels with wide measurement range: 0 ... 1000 Vrms (CAT III / 1000 V)
- ▶ 4 current channels with support for automatic clamp recognition
- ▶ Simultaneous measurement & recording of basic power quality parameters (U, I, P, Q, S, PF, cos ϕ , THD)
- ▶ Power quality analysis and flicker measurement and standardised report printout in graphic and table form
- ▶ 4-quadrant measurements (generator and load with capacitive or inductive character)
- ▶ Phase diagram
- ▶ 509 parameters can be monitored or recorded simultaneously
- ▶ 8 MB of internal memory space allows recording over 4 weeks
- ▶ Large LCD display, 320 x 200 dots, with backlight
- ▶ On-line Scope, Trend and Metering modes
- ▶ Simultaneous 8 channels - 16 bit AD conversion
- ▶ Autoranging flexible clamps (without additional supply) are included
- ▶ PC SW package PowerView

GW GPT Series Hi-Pot Testers



- ▶ GPT-9804 4-in-1 performs 5kV AC, 6kV DC, 1000V insulation resistance and 30A AC earth bond tests.
- ▶ GPT-9803 3-in-1 performs 5kV AC, 6kV DC and 1000V insulation resistance tests
- ▶ GPT-9802 performs 5kV AC and 6kV DC tests
- ▶ GPT-9801 performs 5kV AC tests
- ▶ High-efficiency PWM amplifier platform with AC 200VA
- ▶ 100 memory blocks for automated testing
- ▶ USB, RS232, Signal I/O & GPIB (opt)

| | |
|-------------|----------------|
| GW GPT-9804 | \$2,093 ex GST |
| GW GPT-9803 | \$1,397 ex GST |
| GW GPT-9802 | \$1,147 ex GST |
| GW GPT-9801 | \$994 ex GST |

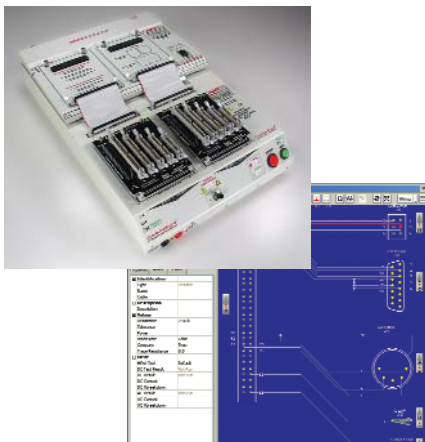
GW Switch Mode DC Supplies



- ▶ 0.01% high regulation
- ▶ Constant voltage and constant current operation
- ▶ High efficiency
- ▶ High power density
- ▶ Overload and reverse polarity protection

| | |
|-----------------------------|--------------|
| GW SPS-1230 0 - 12V 0 - 30A | \$487 ex GST |
| GW SPS-1820 0 - 18V 0 - 20A | \$477 ex GST |
| GW SPS-3610 0 - 36V 0 - 10A | \$477 ex GST |
| GW SPS-2415 0 - 24V 0 - 15A | \$477 ex GST |
| GW SPS-606 0 - 60V 0 - 6A | \$477 ex GST |

CableEye Cable & Harness Testing Systems



- ▶ Professional test system for cables and wire harnesses
- ▶ Complete design, manufacture and test solution
- ▶ Generates cable schematics
- ▶ Production testing of up to 2,500 points
- ▶ Test cables in less than 1 second
- ▶ Identifies opens, shorts and miswires
- ▶ Embedded resistors and diodes can also be tested
- ▶ CableEye software automatically learns cable data and generates detailed schematics and netlists
- ▶ Users can graphically design schematics using drag and drop cable connections or net list input
- ▶ HVX offers testing for insulation resistance and dielectric breakdown
- ▶ HVX hipot module applies user selectable voltage from 10V to 1500V DC or 10V, 100V RMS AC to each connection group in the cable
- ▶ Use standard connector board or easily create custom fixtures

CAMI CableEye from \$1,295 ex GST
 CAMI Cable Eye HVX from \$6,995 ex GST

Emona Instruments Pty Ltd

SYDNEY

78 Parramatta Rd
 Camperdown
 NSW 2050
 Tel 02 9519 3933
 Fax 02 9550 1378

Email testinst@emona.com.au

GROUP WEBSITES

Test & Measurement www.emona.com.au
 Testing & Tagging www.protag.com.au

MELBOURNE

1206 Toorak Rd
 Camberwell
 VIC 3124
 Tel 03 9889 0427
 Fax 03 9889 0715

BRISBANE

1/1644 Ipswich Rd
 Rocklea
 QLD 4106
 Tel 07 3275 2183
 Fax 07 3275 2196

ADELAIDE

3/26 The Parade West
 Kent Town
 SA 5067
 Tel 08 8363 5733
 Fax 08 8363 5799

PERTH

63 Shepparton Rd
 Victoria Park
 WA 6100
 Tel 08 9361 4200
 Fax 08 9361 4300

Installation Testing www.instaltest.com.au
 TIMS Telecoms Trainer www.tims.com.au